

CCMW indexable insert, medium machining OHC6605

ISO P CVD coating

ORION[®]

Application

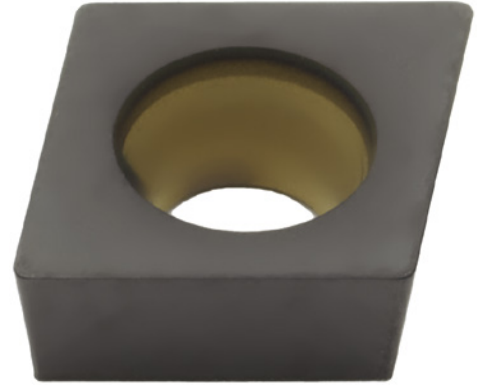
For longitudinal turning and facing with a wide infeed range in favourable cutting conditions

Version

- Sintered cemented carbide indexable insert

Advantage

- Very high level of hardness and wear resistance, for high service life requirements with favourable cutting conditions
- Positive soft-cutting chip geometry with a wide infeed range and stable blades



Art. No.	17996 015
Machining conditions for indexable insert	Good
Shape of indexable insert ISO	C
Clearance angle of indexable insert ISO	C
Tolerance class of indexable insert ISO	M
Indexable insert type ISO	W
Size of indexable insert ISO	06
Thickness of indexable insert ISO	02
Corner radius of indexable insert ISO	04
Coating	CVD
Carbide type area ISO	P
Carbide type ISO	P05
Carbide type	OHC6605
ISO-Code Rotating	CCMW 060204
Material to be processed	Steel, Cast metal, Hardened material
min./max. ap	0.1-1.5 mm
f min./max.	0.05-0.2 mm/r
Materials group	P (primary application), K (primary application), H (primary application)
f min.	0.05 mm/r
max. f	0.2 mm/r
max. ap	1.5 mm
min. ap	0.1 mm
Supply type	Medium processing - Universal geometry with wide service range
Number of pieces per packet	10 PCS

EAN-Code

4039247892563