

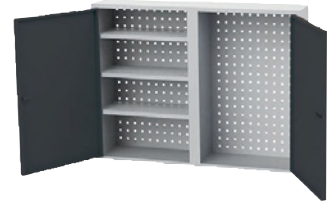
### Wall-mounted cabinet Rear panel, perforated

10 JAHRE  
GARANTIE



#### Execution

- Robust sheet steel construction
- Back panel with square perforation
- Square perforation 10x10 mm
- Distance from hole centre to hole centre 38 mm
- Doors (height 700 mm) can be hinged on the left or right
- Cylinder lock with 2 keys
- Mounted on the wall using anchors and screws



### Technical Data

Product number	1084848 103
Back panel design	Perforated
Number of shelves	3 PCS
Load-carrying capacity per shelf	15 kg
Central locking	Yes
Lock type	Cylinder lock
Load-carrying capacity	60 kg
Material	Sheet steel
Surface	Powder-coated
Manufacturer Part Number	03.87W1000 RAL7035/7016
Commodity Code	94032080



Hommel Hercules Werkzeughandel GmbH & Co. KG

Heidelberger Str. 52 | 68519 Viernheim | +49 (0) 6204 739-0 | info@hommel-hercules.com