

Combination holder, 2 piece

Tool holder for RasterPlan powered by ABAX® perforated plate systems



Execution

- 2 pieces

Advantage

- Tool-free installation
- Simple and safe handling
- Maximum flexibility as can be disassembled without tools
- Impact-resistant and scratch-resistant plastic coating
- Embossed base plates 1.5 mm thick

Delivery

Includes original ABAX® connection

Notes

RasterPlan tool holders with ABAX® connections are an innovative and fully compatible extension of the popular RasterPlan tool holder.

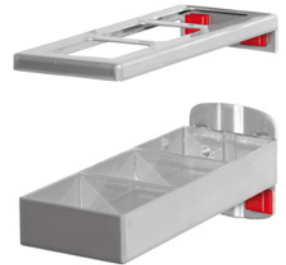
ABAX® connects RasterPlan tool holders to all Kappes products with RasterPlan system perforation in seconds and without the need for tools.

After hooking the holders into the panel, fasten the ABAX® connection and press the locking pin to secure them with a positive fit.

Simply pull out the locking pin (no tools required) to release and reuse the ABAX® connection.

ABAX® for fast and flexible positioning of RasterPlan tool holders.

RasterPlan and ABAX® - a strong connection!



Technical Data

Product number	1082481 154
Manufacturer Part Number	3342.00.5901
EAN Code	4251142234488
Commodity Code	83025000



Hommel Hercules Werkzeughandel GmbH & Co. KG

Heidelberger Str. 52 | 68519 Viernheim | +49 (0) 6204 739-0 | info@hommel-hercules.com