

### Letter punch sets With depth limit

#### Application

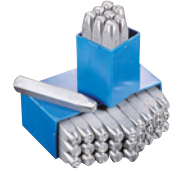
For the most demanding applications, for punching in steel.

#### Execution

- With depth limit
- Plain polished
- With visual engraving
- Heat-treated impact head
- Typeface in accordance with DIN 1451, medium
- Standard design left-engraved (legible impression)

#### Notes

Right engraving (mirror-image impression) for moulds and dies deliverable on request.



### Technical Data

|                          |                    |
|--------------------------|--------------------|
| Product number           | <b>1078413 108</b> |
| Character height         | 8 mm               |
| Length x width x height  | 85 x 12 x 12 mm    |
| With depth limiter       | Yes                |
| Manufacturer Part Number | GRAVUREM-T         |
| EAN Code                 | 4021878310806      |
| Commodity Code           | 82055980           |



**Hommel Hercules Werkzeughandel GmbH & Co. KG**

Heidelberger Str. 52 | 68519 Viernheim | +49 (0) 6204 739-0 | [info@hommel-hercules.com](mailto:info@hommel-hercules.com)