

### Letter punch sets With depth limit

#### Application

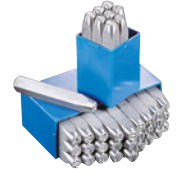
For the most demanding applications, for punching in steel.

#### Execution

- With depth limit
- Plain polished
- With visual engraving
- Heat-treated impact head
- Typeface in accordance with DIN 1451, medium
- Standard design left-engraved (legible impression)

#### Notes

Right engraving (mirror-image impression) for moulds and dies deliverable on request.



### Technical Data

Product number	1078413 103
Character height	2 mm
Length x width x height	75 x 7 x 7 mm
With depth limiter	Yes
Manufacturer Part Number	GRAVUREM-T
EAN Code	4021878310202
Commodity Code	82055980



Hommel Hercules Werkzeughandel GmbH & Co. KG

Heidelberger Str. 52 | 68519 Viernheim | +49 (0) 6204 739-0 | info@hommel-hercules.com